

# HCS

HUSH COMMUNICATION SYSTEMS

COMPANY PROFILE



01 Preview

02 Management Message

03 Purpose, Vision & Mission

05 Value Added Services

06 Certified Team

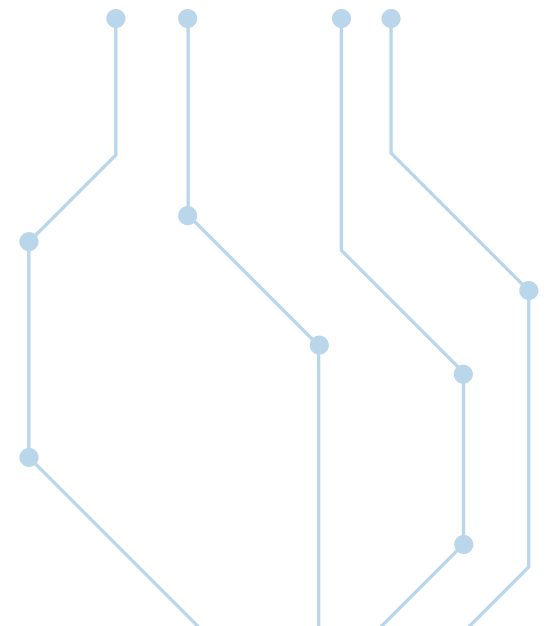
07 Industries

08 Our Partners

09 Our Systems

# TABLE OF CONTENT

---





Like many of our partners, we began as a distribution start-up business in Egypt and expanded into Saudi Arabia, the land of "TIJARA" (trade) and the world's 25th largest export economy as of today.

Our goal was to provide new solutions combined with value-added services that would improve company results in the region. HCS Technology for Trading emerged in Egypt in 2011, establishing HCS.

**PREVIEW**

## **INTEGRITY IS THE FOUNDATION**

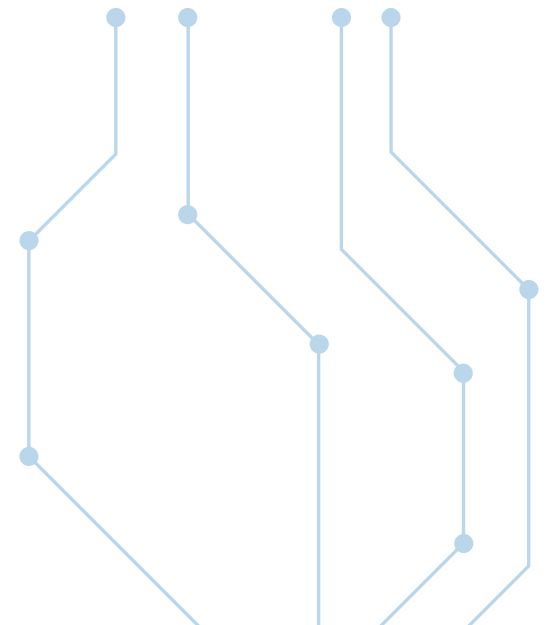
As the region's leading end-to-end technology distributor, we put singular focus on our customers' needs and goals with the objectivity of a true strategic partner. With reach, capabilities and resources that span the technology continuum, we are a vital link in the security industry, delivering the insights and optimized solutions our channel partners depend on to compete in the market today, tomorrow and into the future.

## **CONNECT, GROW AND ADVANCE**

From the smart phone in a user's hand to complex solutions powering a global enterprise, HCS is committed to connects the region with the power of technology. Our portfolio of products, services and solutions, highly specialized skills and expertise in next-generation technologies enable channel partners to bring to market the products and solutions the world needs to connect, grow and advance

# **MANAGEMENT MESSAGE**

---



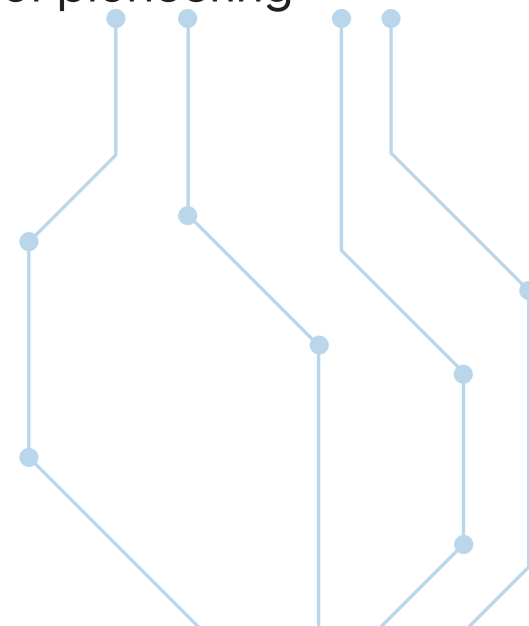


While some may assume the distributor is a middleman who drives costs up for the channel, the opposite is true at HCS. We take on many of the services and programs that the manufacturer or reseller would have had to manage themselves, such as marketing and warehousing for the manufacturer, and technical support, education, training and professional services for the reseller, among many others.

Relieving manufacturers of these value-added functions, allow them to enjoy a reduced cost of sales and intensify their focus on their core mission of pioneering and manufacturing new technologies.

## OUR PURPOSE

---





## **MISSION**

By providing channel partners with reach, efficiency and expertise, we become essential in their ability to meet the evolving needs of the technology market through exceptional service, insight and world-class execution

## **VISION**

To Be The Provider Of Complete Integrated Low Current Systems Solutions and Building Control Management Solutions. Our Ultimate Objective is To Meet Clients Requirements with Design Ingenuity, Quality Products and Prompt Service.

## **Professional Services**

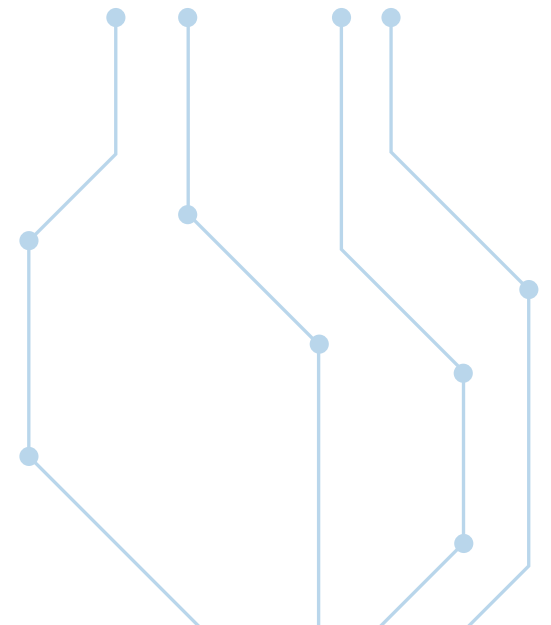
HCS is proud to launch its new division to cater value added service (VAS) to its existing & new clients with assurance of quality services and to eliminate any kind of vulnerability in operations.

Our activities cover Engineering, Design, Configuration, Supply, Testing, Commissioning and maintaining the following Systems as stated here. We in partnership with our manufacturers in Europe, Canada, UK and the USA have supplied and installed and maintained large number of sensitive and prestigious projects in all the territories we cover.

- **Integrated System Design**
- **Testing & Commissioning Services**
- **Service Level Agreements (SLA)**
- **On-Call Service Visits**
- **Supply of Spare Parts**

**VALUE ADDED**  
**SERVICES**

---



- **Consultancy**  
Pre-design & generic specifications, Generation of tender documentations
- **Site Works**  
Perform site acceptance test (Sat), Commissioning project supervision and handling all related site technical requirements
- **Engineering**  
Details designs for systems with supporting drawings and documents Generation of technical submittals
- **Pre-sales works**  
Formation for Technical Proposals
- **Training & Development**
- **Business Planning**
- **Consultancy & Solution Designs**
- **Sell Entire Solutions**
- **Continuous Support**
- **Practical experience based recommendations**



## **WE INSPIRE EACH OTHER FOR EXCELLENCE**

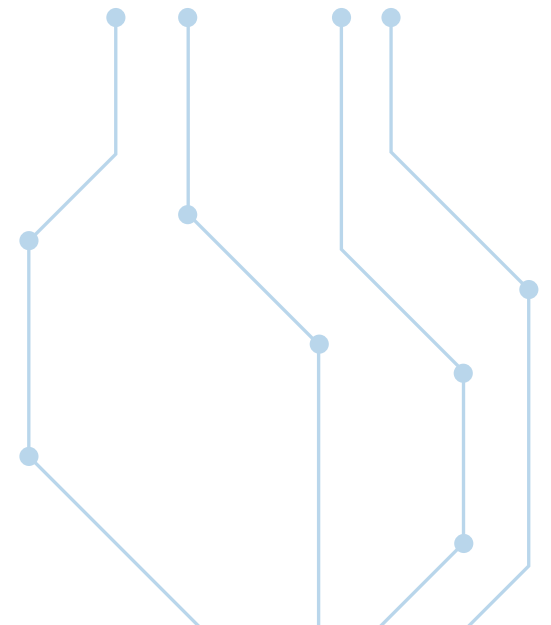
We remain steadfast in an exciting industry, and encompasses a dynamic energy of new challenges and rewarding opportunities. Execution. Diversification.

Innovation. That is our strategy, providing the foundation for our business results and a place to grow our Staff.

From day one, we encourage our colleagues to participate and contribute to our innovative Environment.

**CERTIFIED**  
**TEAM**

---



**Transportation**

**Education**

**Safe Cities**

**Industrials**

**Health Care**

**Banking & Finance**

**Retail**

**Hotels & Restaurants**

**Commercial**

**INDUSTRIES**



## TOGETHER WE CAN MAKE THE DIFFERENCE

HCS is one of the EGYPT prime security distributors. We help major companies, technology providers to bring their products to market, offer a wide range of technical and business support services. We certify, train, instruct and support our reseller customers, and help configure, install and finance their purchases.

Many of the security devices and signage applications that you come across in your daily life have passed through our logistics centers on their way to the market.



## OUR PARTNERS

---

**Honeywell**  
GENT

**AMG**  
SYSTEMS

**SALTO**  
inspired access

**Kelio**

Forefront Technologies 

INNCOM  
by Honeywell

**Bodet**

 **sapling**  
ingeniously in sync

**EATON**

  
ALLEGION™

 **ACKERMANN**  
by Honeywell

 **ALCAD**

**Bodet**  
Software

**CAME** 

**PERCo**

**mcoms**®

**MAKiM**®

**VESDA**®

**ASM**

 **POTTER**  
The Symbol of Protection

**KEHUA**  
*TECH*

  
YUASA

 **RP-TECHNIK**  
PART OF RP-GROUP

**e WORLD**  
Easy World Automation LLC

 **HELUKABEL**®

  
wesco | anixter

 **EAGLE EYE**  
NETWORKS

**ABB**

**SAS**  
SMART AIRPORT SYSTEMS

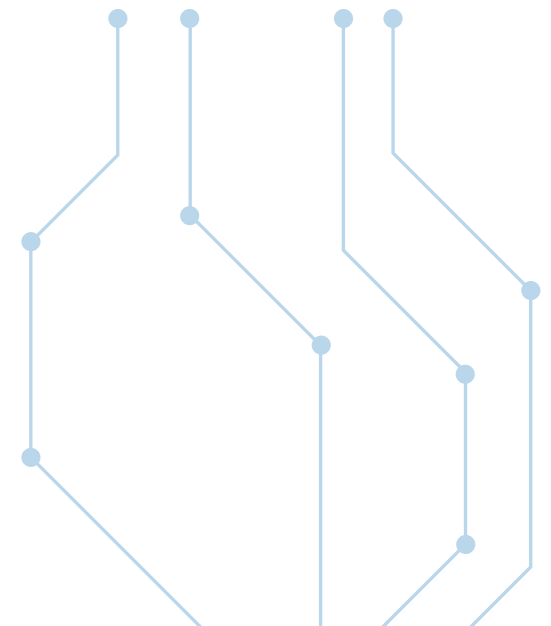
 **BOSCH**

- 1) **CCTV / IP Video Surveillance Systems**
- 2) **ID Management Systems**
- 3) **Intrusion Alarm System**
- 4) **Fire Alarm & Detection Systems**
- 5) **Public Address & Voice Alarm System**
- 6) **Audio Visual Systems**
- 7) **IPTV Systems**
- 8) **IP Telephony Systems**
- 9) **Master Clock System**
- 10) **Nurse Call System**

- 11) **Infant Protection System**
- 12) **Building Management Systems**
- 13) **Guest Room Management System**
- 14) **Lighting Control System**
- 15) **Networking System**
- 16) **WIFI Systems**
- 17) **Wiring System**
- 18) **Uninterruptible Power Supply**
- 19) **Emergency Central Battery System**

**OUR**  
**SYSTEMS**

---





CCTV Stands For Closed Circuit Television. It's A Video Surveillance System Used For Security Purposes. The First CCTV System With Analog Cameras Was Used In 1942 In Germany To Monitor Rocket Launch And Later Evolved To A More Sophisticated System That Uses Digital Surveillance Cameras With Video Analytics Capabilities.

CCTV Plays A Huge Part In Today's Society, And With Cameras All Around Us, Our Day-To-Day Lives Are Experiencing Higher Levels Of Security Each Day.

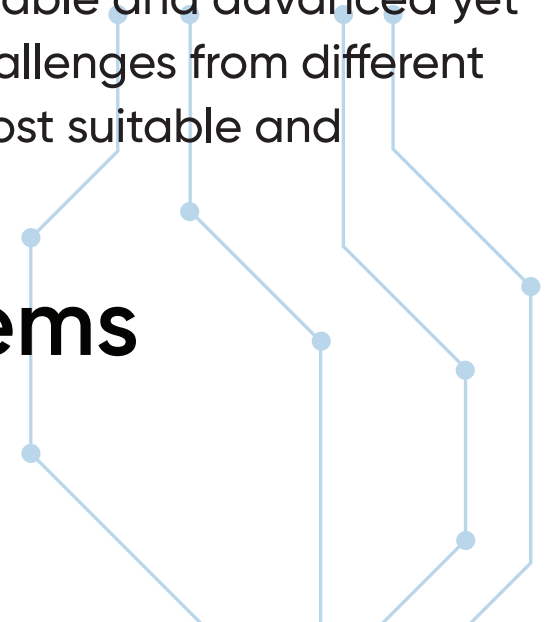
What Many People Don't Know, However, Is That There Are A Variety Of Different Types Of CCTV Camera Which Suit Different Situations Or Premises, And That Selecting The Proper Camera For The Right Application Really Is Vital.

We provide the most up-to-date & cost effective security solutions for all your CCTV needs, with a variety of cameras & accessories. Our CCTV solutions are reliable and advanced yet user friendly. Monitoring and protection to meet a wide range of challenges from different industries and users, Our wide list of products help you make the most suitable and economic choice.

## **CCTV / IP Video Surveillance Systems**

(IP Cameras, NVRs, VMS)

---



With a latest and most advanced video management software, VMS, users can interact and gain situational awareness from their video surveillance systems. Rather than watching static video feeds, Focus of Attention uses artificial intelligence video analytics and Unusual Motion Detection technologies to determine what information is important and should be presented to security operators.

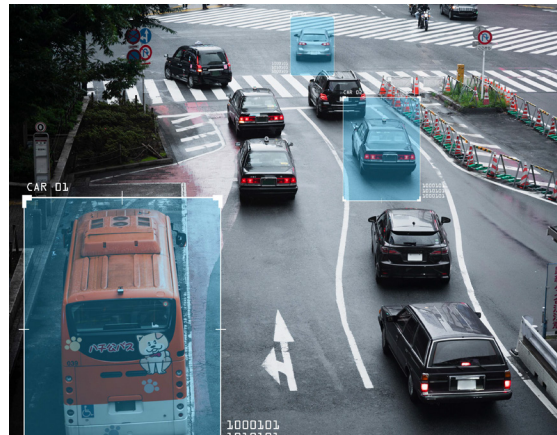
## **It's Not Only Cameras!!**

With artificial intelligence, surveillance is not what camera do, it goes further

**People Counting**

**Wear Detector**

**Traffic Management**



The Purpose Of Access Control Is To Grant Entrance To A Building Or Office Only To Those Who Are Authorized To Be There. The Deadbolt Lock, Along With Its Matching Brass Key, Was The Gold Standard Of Access Control For Many Years; However, Modern Businesses Want More. Yes, They Want To Control Who Passes Through Their Doors, But They Also Want A Way To Monitor And Manage Access. Keys Have Now Passed The Baton To Computer Based Electronic Access Control Systems That Provide Quick, Convenient Access To Authorized Persons While Denying Access To Unauthorized Ones.

### **Basic Components Of Access Control Systems**

- User Facing
- Admin Facing
- Infrastructure

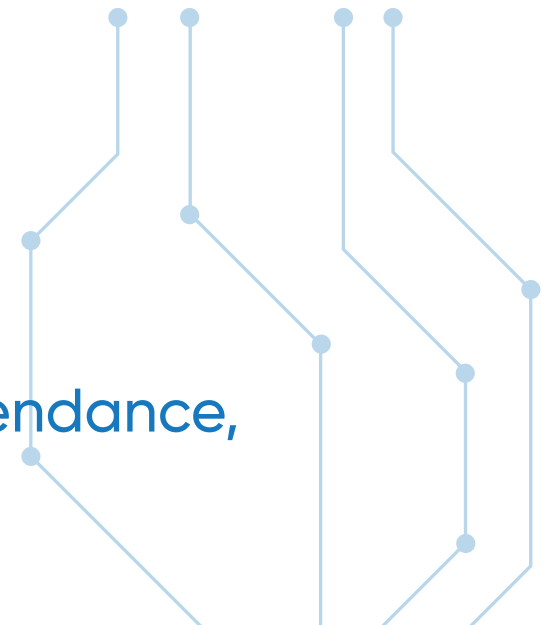
### **Major Options of Access Control Systems**

- Cloud-Based Access Control Systems
- Mobile Or Smartphone Based Access Control Systems
- Iot-Based Access Control Systems

## **ID Management Systems**

Access Control System, Biometric Access, Time & Attendance, Parking & Visitor Management

---



## Three Types of Access Control

- Role-Based Access Control (RBAC)
- Discretionary Access Control (DAC)
- Mandatory Access Control (MAC)

Whatever your needs, and no matter the size of your system, we offer access control solutions that suit your requirements – from the most basic access control management software and hardware to more advanced options. Thanks to open systems and a broad portfolio, our solutions can change, adapt, and grow when you do.



Fire Alarm System Is Designed To Alert Us To An Emergency So That We Can Take Action To Protect Ourselves, Staff And The General Public.

Fire Alarms Are Found In Offices, Factories, And Public Buildings, They Are A Part Of Our Everyday Routine But Are Often Overlooked Until There Is An Emergency At Which Point, They Might Just Save Our Lives.

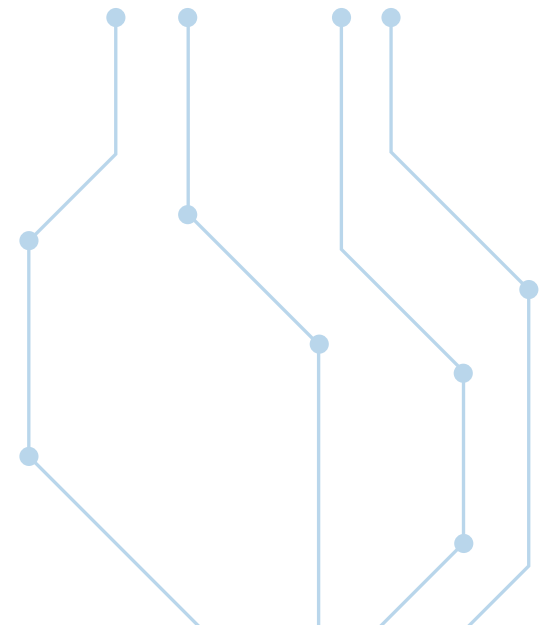
Whatever The Method Of Detection Is, If The Alarm Is Triggered, Sounders Will Operate To Warn People In The Building That There May Be A Fire And To Evacuate.

The Fire Alarm System May Also Incorporate A Remote Signal System Which Could Then Alert The Civil Defense Via A Central Station.

The "Brain" Of The Fire Detector System Is The Fire Alarm Control Panel. It Is The Central Hub For All Of The Detector Signals To Be Wired To And Provides A Status Indication To The Users. The Unit Can Also Be Set Up To Simulate An Alarm For Use In Routine Fire And Evacuation Drills, So All Staff Knows What Action To Take In The Event Of A Real Fire.

## Fire Alarm & Detection Systems

---



## Different Types Of Fire Alarm Detectors

- Heat Detectors
- Smoke Detectors
- Carbon Monoxide Detectors
- Multi-Sensor Detectors
- Manual Call Points

## Different Types Of Fire Alarm Systems

- Conventional
- Addressable
- Intelligent
- Wireless



## Because Safety Matters

With our Partners, fire detection systems have been developed to the highest possible UL & EN standards to deliver the most advanced fire detection and alarm systems available in the market today. As market leader, we have a broad range of Analogue Addressable and Conventional fire detection systems. In addition to this we have built up our expertise in voice alarm systems and have a range of systems to suit to most applications.



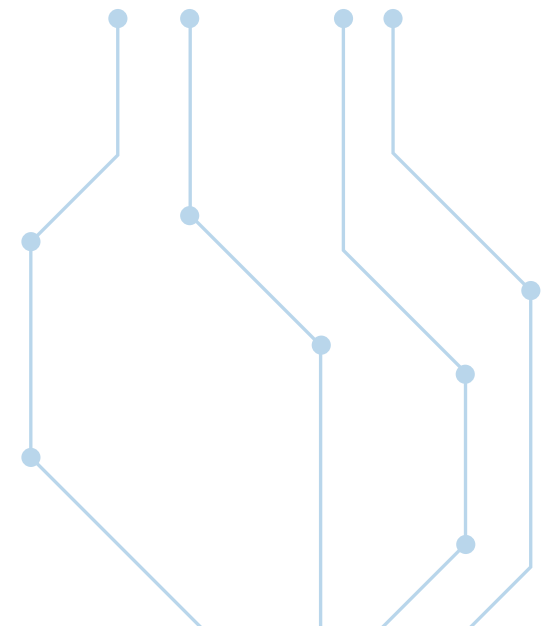
The right message at the right time – every time! A System Of Microphones, Amplifiers, And Loudspeakers Used To Amplify Speech Or Music In A Large Building Or At An Outdoor Gathering. Different Public Address Systems Come With Different Features, Designs And Capabilities. Depending On Your Needs And Requirements You Can Choose An Appropriate Public Address System. A Public Address System Ideally Consists Of Three Parts: A Sound Source, An Amplification System, And A Speaker System. These Systems, As Mentioned Earlier, Are Used To Provide Constant Clarity Of Sound For Long Durations Without Any Hassles Or Confusions.

### **Speakers, Loudspeakers, Microphones, Amplifiers & Volume Controllers**

Basic PA systems offer an unbeatable combination of superior sound reproduction, easy installation and perfect distribution. No matter your PA needs, we have a product that's just right for you!



## **Public Address & Voice Alarm**



## **IP-Based Public Address**

### **Deliver clear, audible announcements—every time**

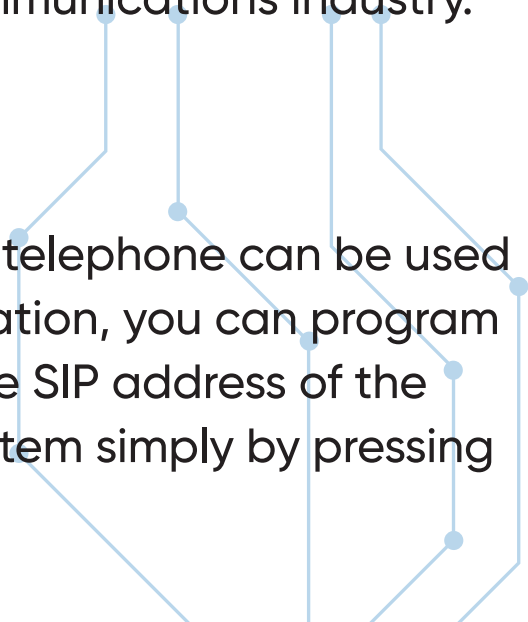
PA systems allow you to mix live or pre-recorded announcements in your daily business operations as well as in emergencies. Designed to help your organization keep people safe and secure and improve operational efficiency, a PA system from HCS ensures clear, efficient communication whenever you need it. Plus, 2-way audio talk-back enables conversations with people near the speaker. Ideal for both paging a specific person or place as well as delivering voice messages to multiple zones, this scalable and flexible system connects to the standard network to give you all the benefits of network audio.

### **IP microphone as input device**

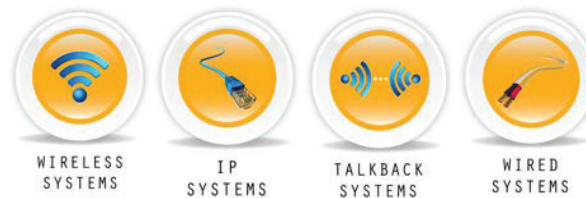
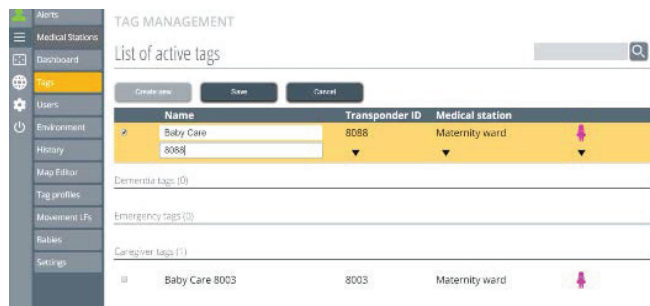
The IP microphone 2N SIP Mic can communicate with IP audio products in two ways – either via the API (application program interface) VAPIX, or via the SIP protocol. SIP is the standard communication protocol in the telecommunications and unified communications industry. All audio products are SIP-compatible.

### **SIP telephone as input device**

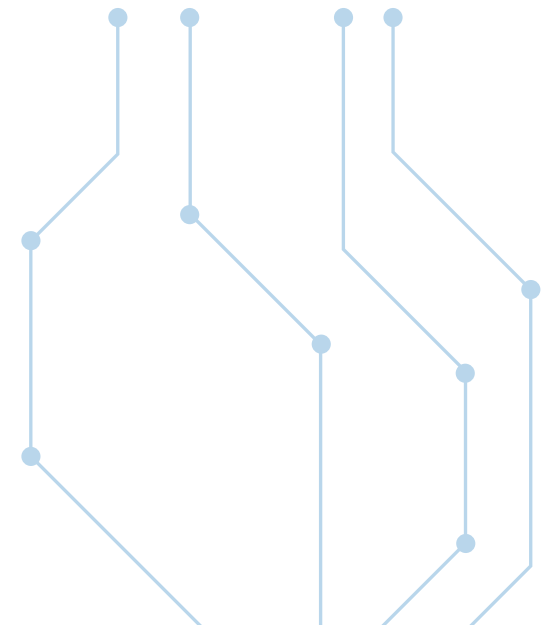
Most office telephones today are SIP-compatible. Any standard SIP telephone can be used to call the SIP address of an IP audio device. To facilitate daily operation, you can program a button, or a combination of buttons, on the phone to represent the SIP address of the audio device. You can then start a live announcement in your PA system simply by pressing that button on the phone.



The Clock 2-Wire System Is One Of The Most Innovative And Advanced Wired Systems In The Synchronized Time Industry. It HCS With The Sapling & Bodet Series Master Clock Sending Time Data To A Converter Box. The Converter Box Is Powered Locally At 110-240Vac And Has Two Functions: It Reduces The Voltage To Provide 24-Volt Power To The Secondary Clocks, And It Sends The Time Data Every Second Over The Same Pair Of Electrical Wires. Sophisticated In Design And Functionality, The System Is Simple To Install And Involves No Regular Maintenance. Both Analog And Digital Clocks May Be Installed On The Same Run. Since There Is No Limit To The Number Of Converter Boxes That Can Be Added To The System. Clock System Can Serve Anything From A Small Facility With 20 Clocks To Mega Projects With 5,000 Clocks Or More. The Master Clock Can Provide Time Data To A 2-Wire System And Most Third-Party Sync Wired Systems Simultaneously, Allowing A Seamless Upgrade Or Transition To The Cutting-Edge.



# Master Clock System



## What is a synchronized clock system?

Shown by the clocks with be uniform and accurate. A synchronized clock system provides the exact time to all clocks in the system. The synchronized clock system typically consists of a "Master Clock" and multiple "Secondary Clocks," also known as "Slave Clocks."

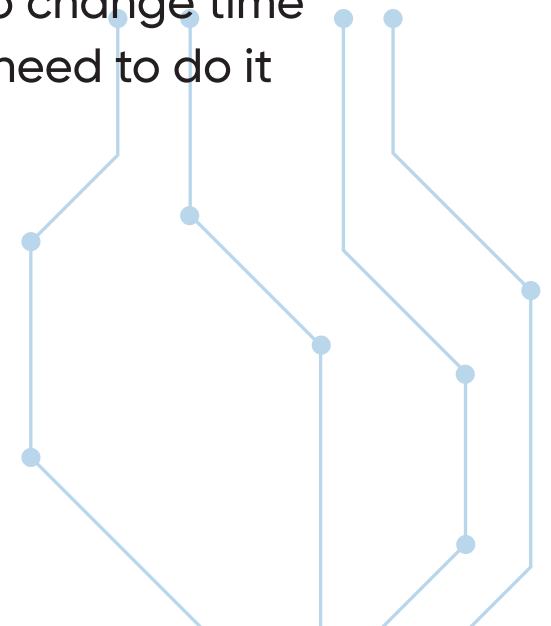
" The Master Clock communicates with all the Secondary Clocks in the system to provide them with an accurate time source.

The purpose is to make sure that all clocks in the system will show the exact same time.

No matter which part of the building you are in, the time

## Benefits

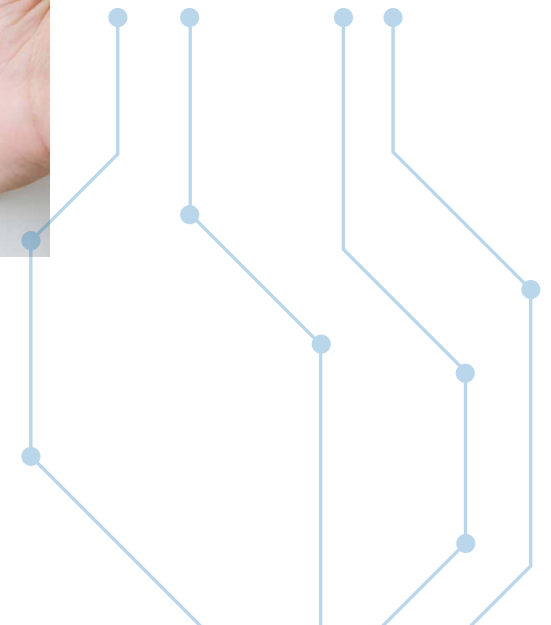
The main benefit of using a synchronized time system is that everyone in the facility will work around an accurate time source; improving efficiency and preventing errors caused by using multiple time sources. The Synchronized Time System from will allow you to choose your Daylight Savings Time settings in order for all clocks in the system to change time automatically when there is a need to do so. This will eliminate the need to do it manually twice a year, when applicable.



Nurse Call System Improves High Acuity Workflow, Collects And Analyses Real Time Data, And Provides Measured Success And Reporting Outcomes. Nurse Call System Prevents Patient Neglect And Unnecessary Staff Stress, Reduces Alarm Fatigue, And Improves Proactive Quality Care For Business Intelligence Whilst Also Fostering A Safe Environment.



# Nurse Call System



## Caregiver Tagging

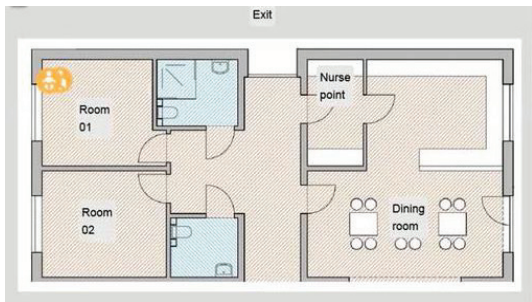
Easily create new caregivers with their corresponding tags System automatically detects new tags and offers only existing ones

## Family pairing

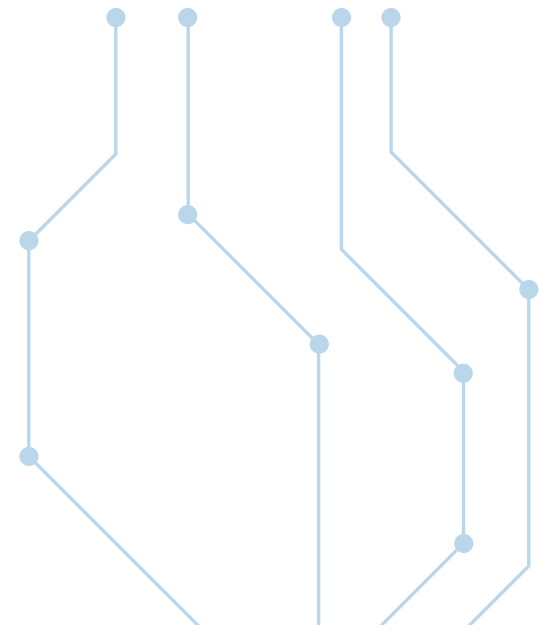
A family consists of one or two parents with their tags and at least one child  
The tags of the family members are linked via software which enables SYSTEVO Guard to detect dangerous situations

## Alarm repression

No alarm is released when detaching the Infant transponder if mother or nurse transponders are in the same LF field



# Infant Protection System

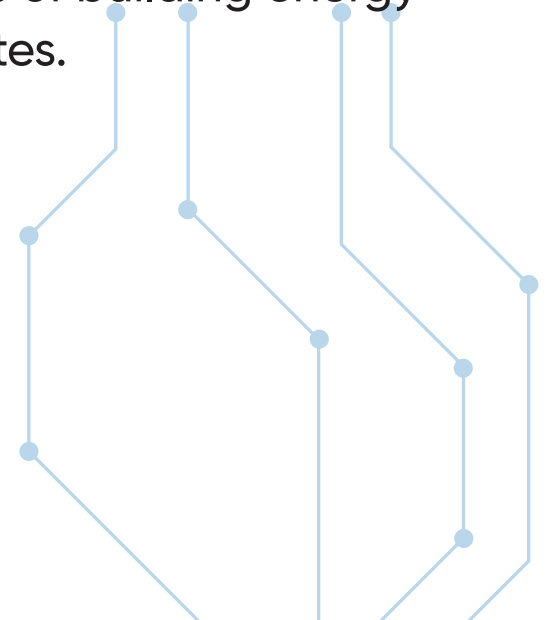


A building management system (BMS), otherwise known as a building automation system (BAS), is a computer-based control system installed in buildings that controls and monitors the building's mechanical and electrical equipment such as ventilation, lighting, power systems, fire systems, and security systems. A BMS consists of software and hardware; the software program, usually configured in a hierarchical manner, can be proprietary, using such protocols as C-Bus, Profibus, and so on. Vendors are also producing a BMS that integrates the use of Internet protocols and open standards such as DeviceNet, SOAP, XML, BACnet, LonWorks and Modbus.

Building management systems are most commonly implemented in large projects with extensive mechanical, HVAC, and electrical systems. Systems linked to a BMS typically represent 40% of a building's energy usage; if lighting is included, this number approaches to 70%. BMS systems are a critical component to managing energy demand. Improperly configured BMS systems are believed to account for 20% of building energy usage, or approximately 8% of total energy usage in the United States.

# BMS

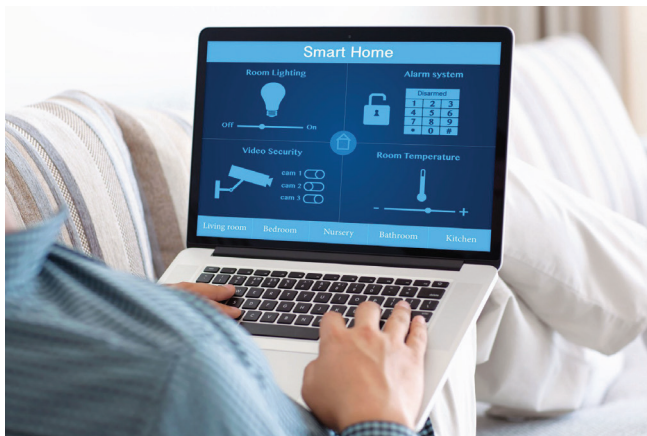
## Building Management System



In addition to controlling the building's internal environment, BMS systems are sometimes linked to access control (turnstiles and access doors controlling who is allowed access and egress to the building) or other security systems such as closed-circuit television (CCTV) and motion detectors. Fire alarm systems and elevators are also sometimes linked to a BMS for monitoring. In case a fire is detected then only the fire alarm panel could close dampers in the ventilation

System to stop smoke spreading, shut down air handlers, start smoke evacuation fans, and send all the elevators to the ground floor and park them to prevent people from using them.

Building management systems have also included disaster-response mechanisms (such as base isolation) to save structures from earthquakes. In more recent times, companies and governments have been working to find similar solutions for flood zones and coastal areas at-risk to rising sea-levels.

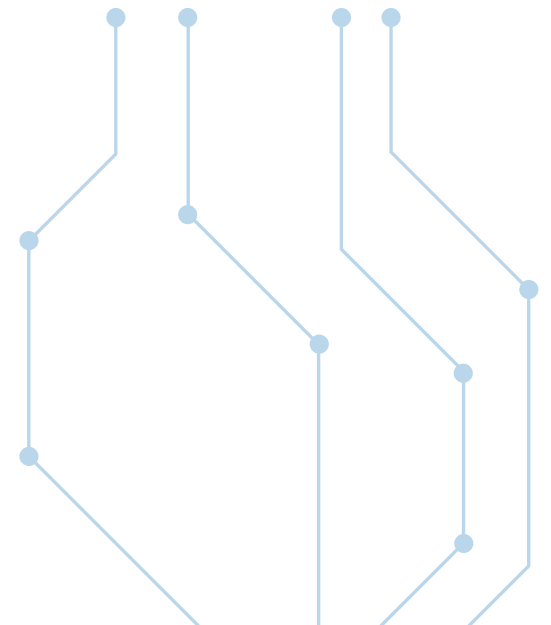


The objective is to consistently satisfy guests' needs and expectations in their rooms. They will appreciate the ability to control the lighting the curtains, the temperature and the fan control unit easily through the user friendly interfaces. Using multimedia connectivity solutions, your guests will be able to connect and use their high-tech equipment in their room.

Synchro offers a complete solution for Guest room Management system that manages different scenarios in each guest room, including welcome, living and sleeping settings. Lighting, temperature and curtains.

All can be controlled by using friendly device to suit the activity of the occupant. Settings can either be adjusted in the room by the guest or centrally via the Central management system.

## Guest Room Management System





Guest Room Management System, different scenes can be set in each guest room for a new and unique experience.



## Lighting Control

- Experience hands-free illumination when entering the home. You can turn on Lights, Air-conditioner, Television, Window screen as you walk.

## Schedules and Timers

- You could programme the lighting system such as "100% intensity" from 6PM to 8PM, 70% intensity from 8PM to 10PM and few lights only whole night etc.,
- Main door opening at desired time
- Switch on/off -GEYSER

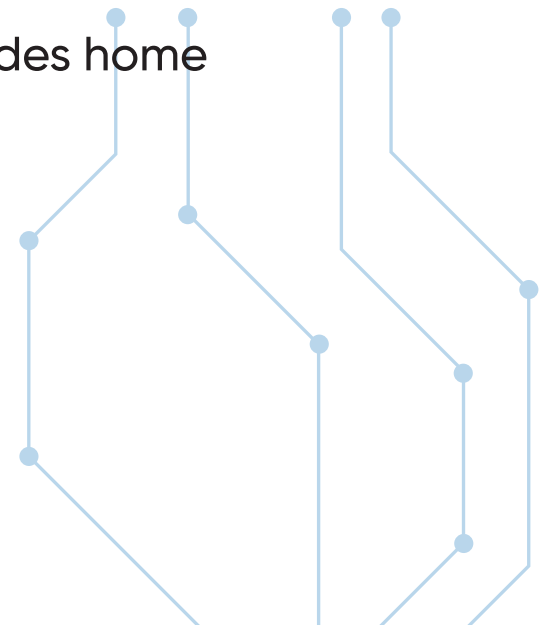
## Climate Control

- Switch on FAN / Air.conditioner based on room temperature, weather based or time based

## Entertainment

- Set the audio/video programme as you wish Security Keypad Provides home

# Smart Home & Lighting Control System





## High Efficiency

The innovative design and high quality of the components used enable our UPS to achieve up to 96% efficiency, leading to significant energy savings.

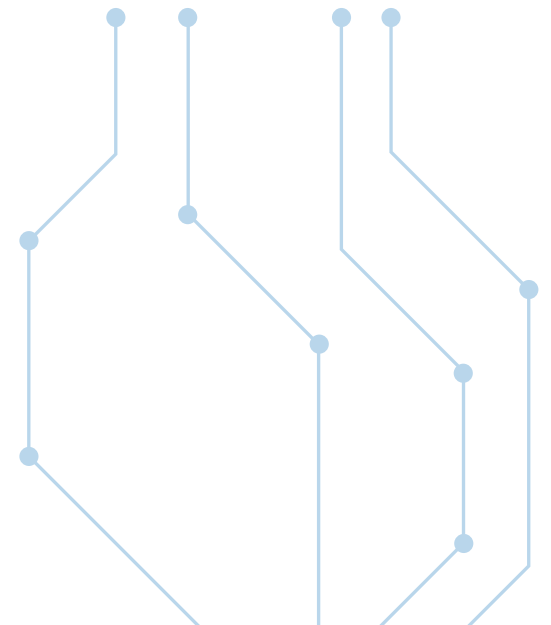
## Advanced Technology

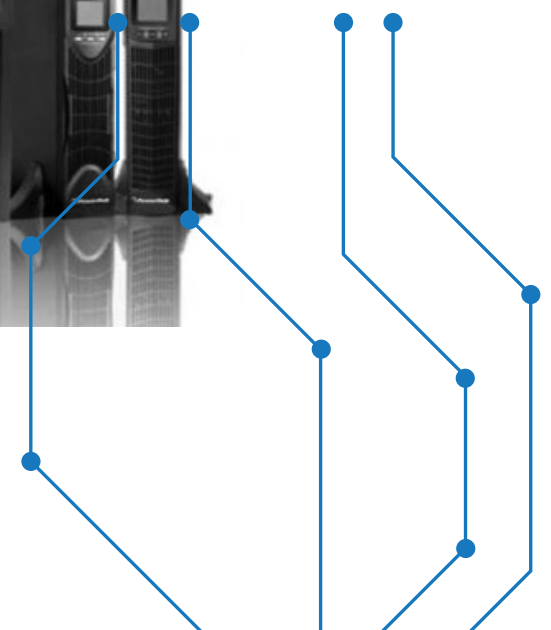
The On-line Double Conversion technology ensures provision of a top quality power supply and maximum energy efficiency.

## Environmentally Responsible Approach

Our UPS are built with the greatest care with a view to sustainable development. Moreover, Legrand has developed an innovative testing system which reduces the energy consumed for each device manufactured.

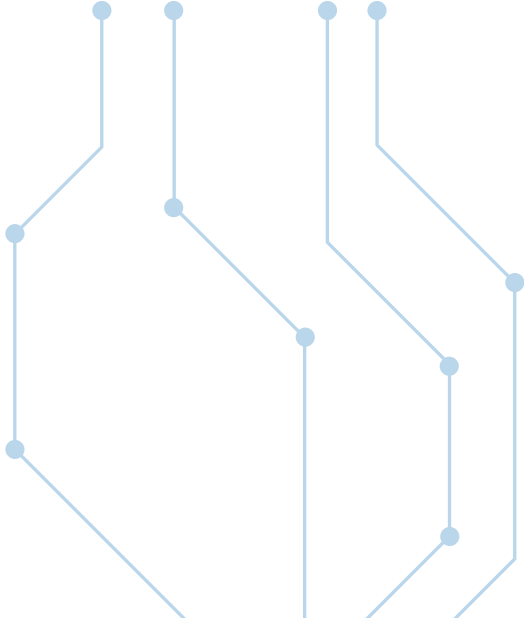
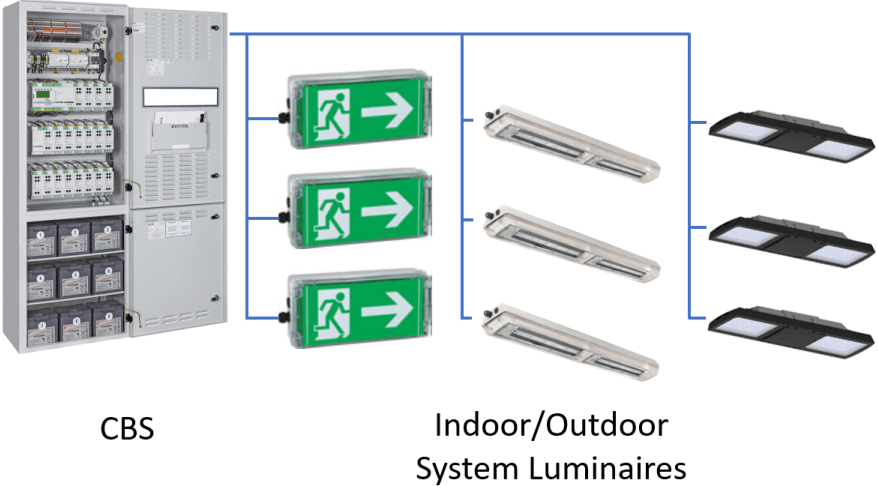
# Uninterruptible Power Supply (UPS)







We offer the complete setup for your emergency lighting projects. With extensive experience of designing and manufacturing safe and reliable emergency lighting. We safely direct people to exits in hotels, hospitals, shopping centres, libraries and numerous other public buildings. Our product range includes a wide selection of emergency escape lighting, using long life LEDs as light sources and can operate AC/AC and AC-DC addressable. Both centrally supplied and self-contained solutions with wireless control are available.



# TECHNOLOGY INNOVATION SUSTAINABILITY

📍 Jeddah : Kingdom of Saudi Arabia  
Egypt Sheikh Zayed : Arkan Mall, Building 2, Sixth Floor

🌐 [www.hushcsystems.com](http://www.hushcsystems.com)

✉ [info@hushcsystems.com](mailto:info@hushcsystems.com), [systems@hushcsystems.com](mailto:systems@hushcsystems.com), [sales@hushcsystems.com](mailto:sales@hushcsystems.com)

📱📺📷📧 HUSHCSYSTEMS

